

sPad WiFi

User Manual

Please download & install the APP before use



iOS QR



Android QR

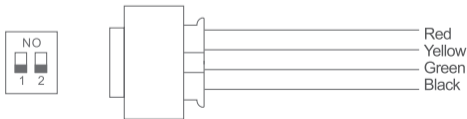
1. Product Introduction

This Exit button support remote control. Suitable for standalone access control, split access control, access controller etc.

2. Technical Parameters

- Input voltage: DC 12~24V
- Standby current: $\leq 70\text{mA}$ (when input DC 12V)
- Operating current: $\leq 85\text{mA}$ (when input DC 12V)
- Operating temperature range: $-40\sim 60^{\circ}\text{C}$
- Operating humidity: 0~95%
- Signal relay contact current: $\leq 1\text{A}$
- Dimension: 86X86X12mm

3. Wiring & Mode Operating Instruction



· 01 ·

1. Wiring instruction: Red cable connect to the Positive pole of power supply(+v); black cable connect to the negative pole of power supply(-v); There is a relay switch between the yellow cable and green cable in series. Please move the toggle switch 1 to ON if you connect with the access keypad or access controller. Yellow cable connect with the exit button port (OPEN) of access keypad or access controller. Or leave the toggle switch 1 to 1, yellow cable connect with the exit button port(OPEN) of access keypad or access controller, green cable connect with ground (GND).
2. Mode operating instruction: It is switch mode when leave the toggle switch 2 at 2. It is the self-locked when move the toggle switch 2 to ON.

4. Download “ Ewelink ” APP & install

1. IOS system, please scan the left QR or search Ewelink APP from app store.
2. Android system, please scan the right QR or search Ewelink app from the app market. Please make sure you download the latest version or else the system will ask you to update to the latest version.



iOS QR

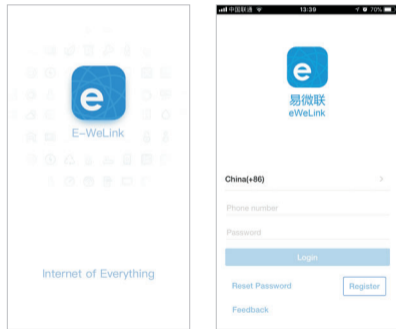


Android QR

· 02 ·

5. Register ,Log in the Ewelink Account

1. Open the Ewelink app. For the first time, the app will ask user to register. Please register follow the steps. Please note the PIN Code can't be less than 8 digits.
2. Please input the cell phone number and PIN code to log in the app, just like the app below. The app will log in automatically next time if you don't exit. Or else you need to log in again.



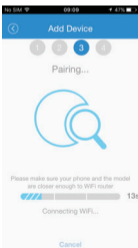
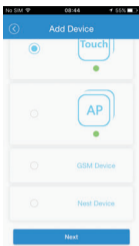
6. Pair the WiFi exit button with the cell phone WiFi

There are two modes for the pairing of WiFi exit button and the cell phone WiFi. One is auto and the other is manual. The distinction is the flashing way of the red LED. The device will enter into pairing mode automatically when touch and hold the exit button more than 6 seconds at the first time. When touch and hold the exit button more than 6 seconds at the second time, the device will enter into manual mode. The red LED will lighten and flash regularly.

- ① Red LED flashes three times and off one time, enter into pairing mode automatically.
- ② Red LED slow flashes two times then change to quick flash regularly, enter into manual pairing mode. IOS and Android follow the steps below separately.

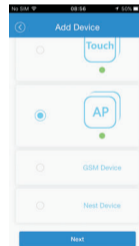
IOS automatically setting

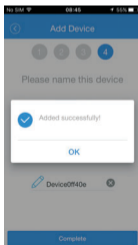
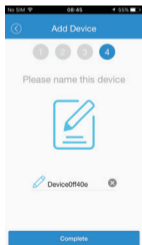
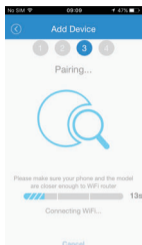
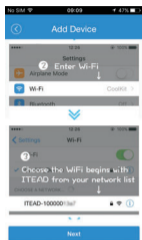
1. IOS setting, enable the wireless LAN and choose the available WiFi.
2. Open the Ewelink app. The devices list will be shown. Click the + icon, enter into add device interface, choose the first default icon. Click the "next step".
3. Check the WiFi network name and input the code; click the next step, waiting for the pairing. Click" add done" and OK. The device is paired with your cell phone.



IOS Manual Setting

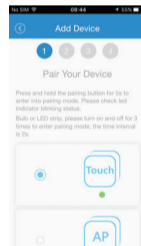
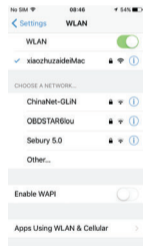
1. IOS setting, enable the wireless network, Choose " ITEAD-10000 " network, input PIN 12345678. connection done.
2. Open the Ewelink app. The devices list will be shown. Click the + icon, enter into add device interface, choose the first default icon. Click the " next step".
3. The window will ask you to input a available network name and code. Click the next step, waiting for the pairing. Click" add done" and OK. The device is paired with your cell phone.

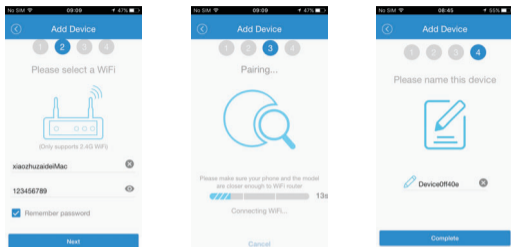




Android Automatically Setting

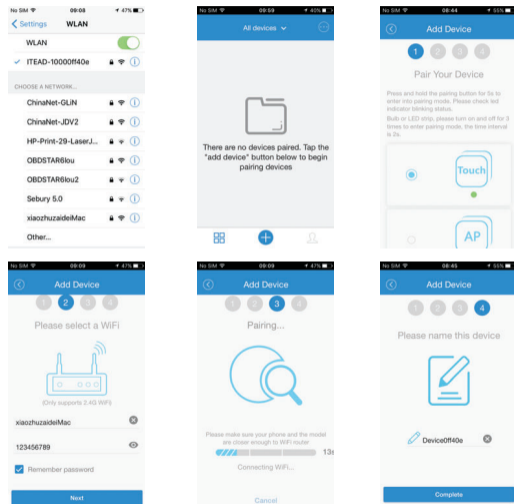
1. Android setting, enable the wireless LAN and choose the available WiFi
2. Open the Ewelink app. The devices list will be shown. Click the + icon, enter into add device interface, choose the first default icon. Click the "next step".
3. Check the WiFi network name and input the code; click the next step, waiting for the pairing. Click "add done" and OK. The device is paired with your cell phone.





Android Manual Setting

1. Android setting, enable the wireless network, Choose "ITEAD-10000" network, input PIN 12345678. connection done.
2. Open the Ewelink app. The devices list will be shown. Click the **+** icon, enter into add device interface, choose the first default icon. Click the "next step".
3. The window will ask you to input a available network name and code. Click the . next step, waiting for the pairing. Click" add done" and OK. The device is paired with your cell phone.



7. APP & WiFi Use Attention Points

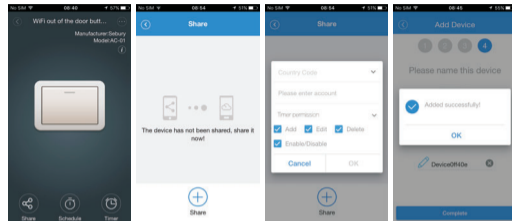
1. The latest APP support Chinese WiFi name, please update to the latest version.
2. Please leave the PIN Code blank if there is no Code of your home WiFi.
3. The Device use the 2.4G WiFi communication protocol. Can't support 5G network for now.
4. If your network has been set to hide or filter MAC addresses, please let the network administrator modify the settings on the background, and then add the machine.
5. APP will search and switch to the device hot spot (ITAED-XXXXXX) automatically. It will jump to next step automatically if the register done.

8. How to Open & How to Share

1. Click ON/OFF icon to open the door . There is sync feedback of Open/Close status.
2. The master account can share the authority to others. The master account is the first account which add the device. Only the registered E-Welink account can be shared. Please keep online when sharing.

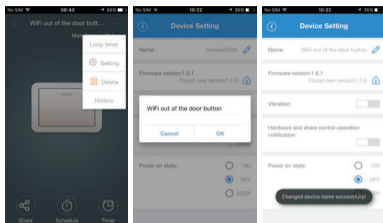
Steps:

Click share/"+" share the device/choose country/input the account which will be shared/Click confirm/Confirm the share. The master account and shared account can both delete the shared device.



9. Name the Device

You can name the device yourself. Click icon ☹️ /setting/my device/give the device a new name/input the new name/Confirm. Or you can change to a new name directly when add the new device.

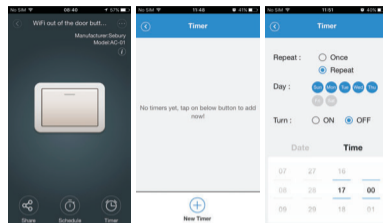


10. Set Open/Close the Door Timing

When set the open/close timing, WiFi exit button switch to lock-self mode. And in the meantime you can set 8 groups timing to open/close at the appointed time. For example, Monday-Friday 9:00AM open/17:00PM close.

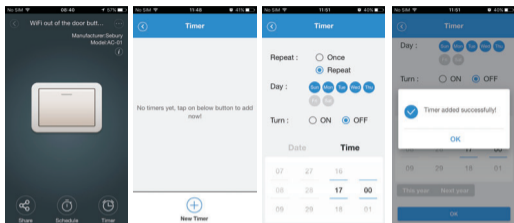
Steps 1 :

Click the timing icon - Add timing - Repeat week (Mon.-Fri.) - Open/Time: 9:00. Like the follow pictures.



Step 2 :

Click timing icon - add timing - Repeat week (Mon.-Fri.) - Close/Time:17:00. Like The follow pictures.

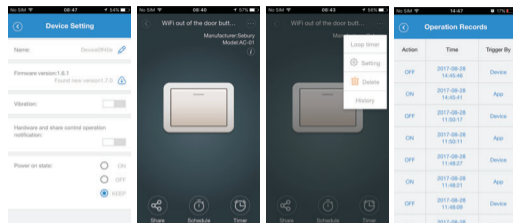


11. Delete the Device & Security Regime

Each WiFi exit button support full capability control by only one master account. The master account can share the authority to other accounts. Users need to delete the device from the master account first then other accounts can be paired the WiFi exit button to be the new master account.

12. Vibrating Alert, Device & Share Users Message

Set the vibrating alert on .There will be vibrating alert when the door open. If the door wasn't opened there will be no alert. Set the device & share users on. There will be new records of the open info generate when click the exit button or shared users open the door. Click ⓘ/click operation records.



13. APP Language (Chinese & English) Switch

App will recognize the language of your mobile phone system automatically. You Can also change the Chinese/English version by manual.

14. Contact US

Click icon ⓘ to show the company & contact info.

15. FAQ & Solutions

1. The device not on line after added successfully

There will be 1-2 minutes network connection time after added the device successfully. If still not on line for a long time, please check the indicator light.

- ① The red light fast flash one time then off indicates that the connection to your router failed. Maybe the password of the WiFi is wrong or the weak signal as the device is far from your router. or there is interference from the environment. Please try follow tips one by one: please take the device to the router / power off the device and add again/Please use the 2.4G WiFi router as the device can't support 5G router. Make sure that your background didn't set to filter MAC address.
- ② The red light flash on 1 second and off 1 second indicates the router and server is working but the device didn't added to the master account. Please power off and power on, wait a minute. If still not working, please add the device again.
- ③ The red light quick flash two times and off 2 seconds indicates the device connected to the router successfully but failed to connect to the server. Please make sure that your router has the stable network. If double flash happened many times indicates your network is not stable.

2. Tried many times but still can't add the device successfully.

The mobile phone doesn't have enough time to refresh if you add it frequently. Please close the Wlan function and enable it after a while. You'd better power off the device and restart. Then try again.

3. Support cell phone network control ? Support the LAN control ?

Cell phone can use the 2G/3G/4G to control remotely. Android/ISO support LAN control. Your home WiFi need to work good.

16. Wechat Control

You can also use Wechat to control beside APP. Please search " Coolkit " from Wechat after the APP setting done. You can enable this function after log in with your register account. Have fun with the remote control. More functions waited for your to discover.